

ACO

Belt conveyor, flow accelerator

Composed of a fabricated profile section chassis, the **ACO conveyor is used for intensive industrial conveying**. Its structure is adapted to accommodate optical sorting detection machines and the various related options.

Its robust, stiff and flexible design endows it with great reliability and optimizes maintenance costs. Manufactured in our Sedan works.

Its ergonomics have been designed to meet legal requirements in terms of **personal safety, maintenance and service ability**, in compliance with current technical standards, in particular the **Machinery Directive 2006/42/EC**.

Common fields of use



Dry products



Products $\leq 1\,300\text{ kg/m}^3$



Recycling plants



Household waste



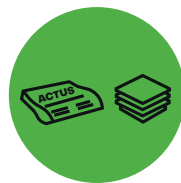
Industrial waste



Hollow bodies



Bottling



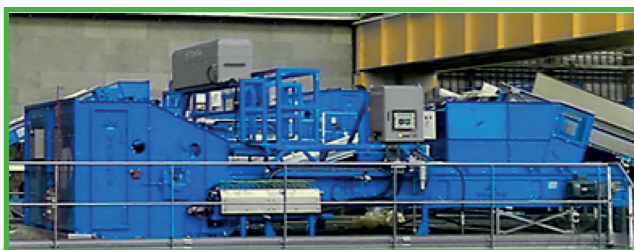
Flat bodies



Papers/boxes



Versions



Accelerator conveyor
for feeding optical
separators

Main characteristics

Standard belt widths	Length	Linear speed	Belt conveyor
960 - 1 360 - 1 560 - 1 760 - 2 160 - 2 560 - 2 960 mm	≤ 12 m maxi	≤ 3,00 m.s ⁻¹	Smooth rubber band

Pre-equipment for options



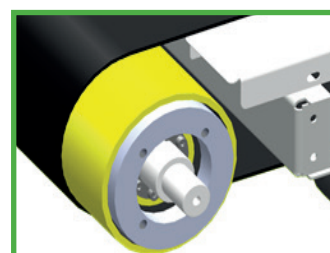
Anti-strip rollers



PELLENC ST



TOMRA



Head and foot drums
covered with anti-
winding discs creating
baffles to limit
material windings

Advantages



Very reliable
industrial
equipment



Robust
design



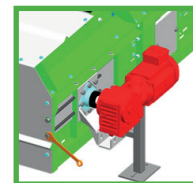
Optimized
maintenance



Low energy
motor



High quality
components



Belt tension
adjustment
without
dismantling
protective
elements